

## Winlink Peer-to-Peer Connection with Specific HF Target Stations Using VARA HF

This 4<sup>th</sup> week, for those of you with a reasonably good HF station, we offer the opportunity to make a Winlink Peer-to-Peer (P2P) HF connection to one of our Target stations across the country. A P2P connection requires that your Winlink Express station connect to another Winlink Express station, NOT a Winlink RMS node, and pass messages addressed to that station only. You must be using the same mode for communication. In our case we are using VARA HF P2P.

Create a Winlink Check-In form as you have for other exercises. There is no field to indicate this

Enter a new message

Close Select Template EmComm Checkin Attachments Post to

From: KW4SHP Send as: Peer-to-Peer Message

To: N0AXZ

Cc:

Subject: WT Check In via P2P with N0AXZ

Attach: RMS\_Express\_Form\_Winlink\_Check\_In\_Viewer.xml

Forward to ETO-DX@winlink.org

Check-in

Status: [Exercise]

Date/Time: 2021-8-21 00:55

Initial Assigned Operators: KW4SHP

Location: At Home

GPS Coordinates: 38.9214,-77.4100 MGRS Coordinates: 18STJ910

Band Used: VHF

Session Type: Vara FM

Call/Tactical Sender: KW4SHP

is a P2P message, so click the **Setup** button, and enter **P2P Exercise** as a title. We ask you to include in the message area information on your station, the radio and antenna you are using and what power. Click **Submit** and return to Winlink New Message window. The Check-in form data is presented in the body of the text message. For this exercise, please add the text, "**Forward to ETO-nn@winlink.org**" (your Regional Clearinghouse) in the message body text directly below the **Subject** line, and above the "-" line.

Also replace the Subject that came from the Check-in form with **WT Check In via P2P with [Target P2P Callsign]** (Where N0AXZ was the Target Station you used, and ETO-DX is your Clearinghouse).

There are three things you must do differently when doing P2P, as opposed to regular Winlink email (see graphics on next page):

1. Address the message to the specific Target station you are sending the P2P message to (see the list of Target Stations attached) – NOT your Regional Clearing House.
2. Select **Send as: Peer-to--Peer message** (not a Winlink message).
3. After **Posting to Outbox**, Open a **VARA HF P2P** session. (The P2P message stored in the Outbox will remain there until you have successfully connected a P2P session to the addressed user of your P2P message).

Then there are two things you need to know (that you didn't need to know for a regular Winlink email): The frequencies and the times that the Target stations will be tuned in and listening for a P2P connection. The frequency to enter is the Center Frequency (CF) of the mode and the dial frequency you see on your radio will be calculated (-1500 Hz). (See next page for screen shots of the procedure). Then you are ready to hit **Start** and see if you can connect to your Target.

*Please send your traffic on Thursday, August 26<sup>th</sup> ONLY using the following time and frequency schedule (all times are TARGET STATION LOCAL TIME):*

Email questions to: [WinLink.Technical.Team@EmComm-Training.groups.io](mailto:WinLink.Technical.Team@EmComm-Training.groups.io)

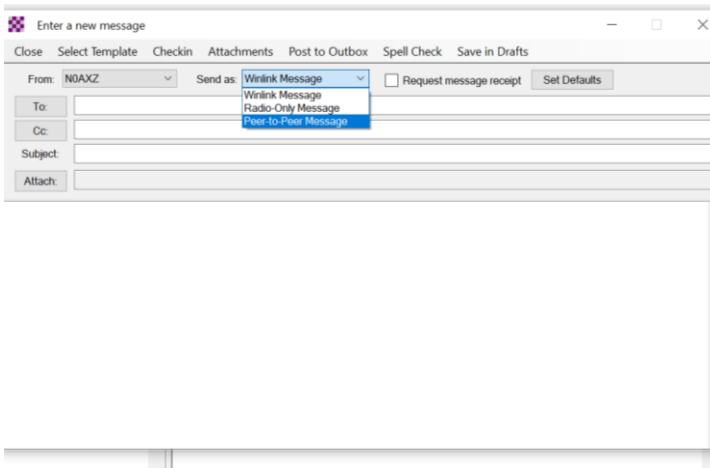
or see our web page: <http://emcomm-training.org/>

**6 AM – 10 AM on 80 meters: 3561.500 CF, 3560.000 DF**  
**10 AM – 2 PM on 40 meters: 7113.500 CF, 7112.000 DF**  
**2 PM – 6 PM on 20 meters: 14121.500 CF, 14120.000 DF**

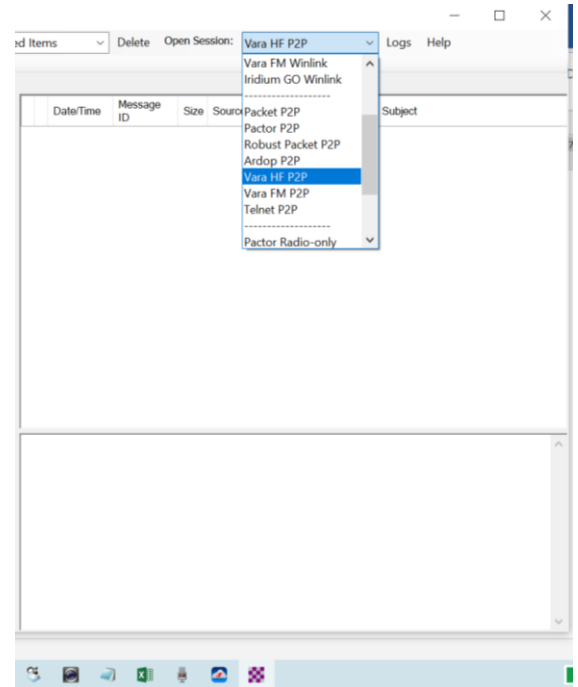
## Monitoring Stations

**See the attached list of target stations.**

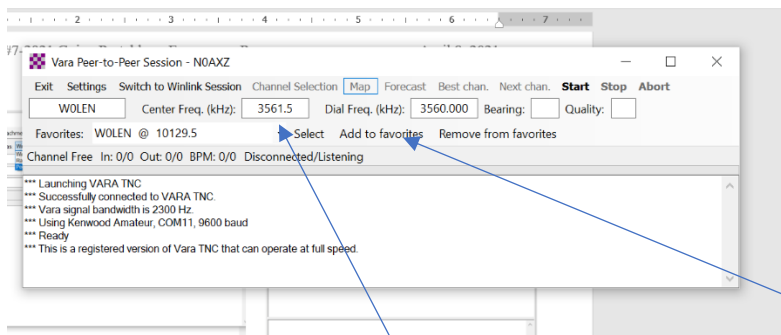
If you were not successful in making a connection for the P2P exercise, please create another Check-in form and send it to your clearinghouse by regular Winlink and include in the message field which Targets you tried, when, band, and how much power you were using.



Choose to "Send as" a P2P message.



Select VARA HF P2P for the session.



Enter the Center Frequency here, and you may want to save these parameters: "Add to Favorites".